



YWCA Cambridge



# SUMMER DAY CAMP

Outdoor Camp (ages 4-12): Shade's Mills Conservation Area, 450 Avenue Rd.

&

Indoor Camp (ages 4-10): Wesley United Church, 6 Cambridge St.

**REGISTRATION OPENS FEB 3, 2025, at 5:00pm!**

YWCA Cambridge summer camps will take your camper on an adventure that will teach new skills, build confidence and create lasting memories!

### A NOTE ABOUT CHANGES TO OUR CAMP PROGRAMMING

This year, at both of our indoor and outdoor summer camps, we will be offering specialty-themed camps, embedded into our everyday camp programming! Rather than individually-themed camps, we will be incorporating elements of all of those themes into every week at camp. Campers will engage in lots of fun activities, exploring STEM education, learning new "survival" techniques, and developing new skills! If your child needs a quieter, small group camp experience, our indoor camp is just for them!

**Subsidy** is available for qualifying families through the Region of Waterloo Child Care Subsidy Office (519-575-4400), or **by visiting this website.**

### VOLUNTEER PROGRAM

Open to youth 14 years old who have completed grade 9 or a Counsellor in Training program at YWCA Shade's Mills Camp. If you enjoy working with young children and enjoy the outdoors, this volunteer opportunity is for you! We also have a few spaces available in our indoor camp at Wesley United. Apply online at [ywcacambridge.ca](http://ywcacambridge.ca).

### COUNSELLOR IN TRAINING (CIT)

This training is designed for youth 13 - 16 years old to build a foundation of leadership and programming skills. This course will prepare youth to volunteer in children's programs in preparation for summer jobs. Upon completion of this training each attendee will graduate with a standard first aid certification. Graduates will be eligible to volunteer in the YWCA Day Camp program following successful completion of training. Apply online at [ywcacambridge.ca](http://ywcacambridge.ca).

9:00 a.m. to 4:00 p.m.  
Extended Day available 7:30 a.m. - 5:00 p.m.

[ywcacambridge.ca](http://ywcacambridge.ca)



## ENVIRONMENTALLY FOCUSED

The beautiful Shade's Mills Conservation Area is perfect for activities focused on nature and the environment.



## AFFORDABLE

Subsidized spaces are available so every child can enjoy camp.



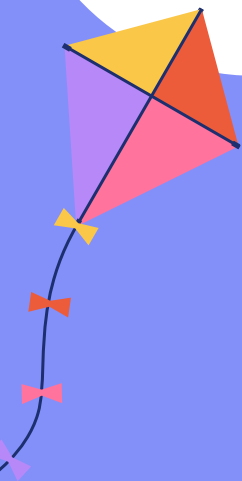
## INCLUSIVE

Support staff will be available to ensure that children who need a little extra support can enjoy camp.



## HIGH FIVE CERTIFIED!

As a High Five® registered camp, our programs integrate essential principles of healthy childhood development.



CAMP	DATES	COST
Full Week 5 Days	July 7-11 July 21-25 July 28-Aug1	\$260
Full Week+ 5 Days	July 14-18 Aug 11-15 Aug 18-22	\$270
Short Week 4 Days	August 5-8	\$208
Short Week 3 Days	July 2-4 Aug 25-27	\$156
Counsellor In Training (CIT) Camp	July 7-18 <i>*At Shade's Mills Only</i>	\$325

With a special outing or visitor!



Extended Day Care: 5-day week \$55 | 4-day week \$44 | 3-day week \$33

Camp Director: Noor Sabah | camp@ywcacambridge.ca | 226-220-6285